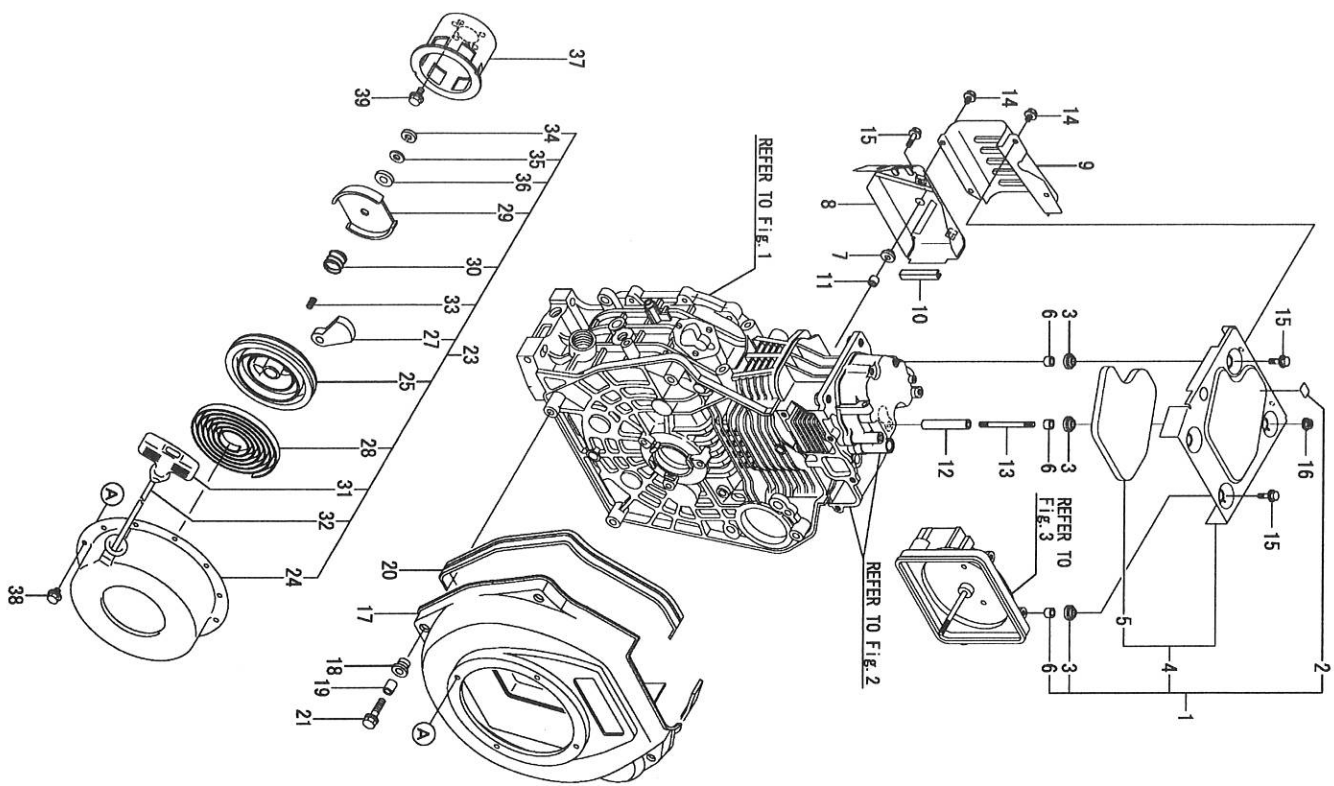


Fig. 6. COOLING & STARTING DEVICE



OCR10-G76400 6. COOLING & STARTING DEVICE

REF.	LEV.	PARTS NO.	DESCRIPTION	(A)	(B)	(C)	(D)	(E)	(F)	I	R
1	1	714310-45100	TOP COVER, ASSY	1							
2	2	114210-07200	LABEL, DECOMPRESSION	1							
3	2	114299-45220	GROMMET TANK	4							
4	2	114310-45300	COVER, TOP(BLACK)(13)	1							
5	3	114310-45310	DAMPER	1							
6	2	114399-45340	COLLAR, CYL. COVER	4							
7	1	114299-45220	GROMMET, TANK	1							
8	1	114310-45260	COVER B, SIDE (13)	1							
9	1	114310-45270	COVER A, SIDE (13)	1							
10	1	114399-45320	RUBBER SEAL	1							
11	1	114399-45340	COLLAR, CYL. COVER	1							
12	1	114310-45350	SPACER, TOP COVER	1							
13	1	114310-45360	STUD BOLT, TOP COVER	1							
14	1	26106-060082	BOLT M 6X 8 PLATED	4							
15	1	26106-060202	BOLT M 6X 20 PLATED	4							
16	1	26366-060002	NUT M 6	1							
17	1	114310-45100-1	FAN CASE (GRAY)(2K)	1							
18	1	114299-45301	RUBBER CUSHION	4							
19	1	114299-45310	COLLAR, FAN CASE	4							
20	1	114699-45330	SEAL, FAN CASE	1							
21	1	114299-45350	BOLT, FAN CASE	4							
23	1	114699-76251	RECOIL ASSY	1							
24	2	114699-76510	CASE, STARTER	1							
25	2	114699-76521	REEL, RECOIL	1							
27	2	114699-76531	RATCHET	2							
28	2	114399-76540	SPRING, SPIRAL	1							
29	2	114699-76551	GUIDE, RATCHET	1							
30	2	114699-76560	SPRING, FRICTION	1							
31	2	114399-76620	KNOB, STARTER	1							
32	2	114699-76630	ROPE, STARTER	1							
33	2	114699-76650	SPRING, RETURN	1							
34	2	114699-76660	RETAINING RING	1							
35	2	114699-76670	WASHER	1							
36	2	114699-76680	WASHER IN NYLON	1							
37	1	114699-76592	PULLEY, STARTER	1							
38	1	26106-060082	BOLT M 6X 8 PLATED	4							
39	1	26106-060122	BOLT M 6X 12 PLATED	3							

(A)=L100NSEJ1T1AA  
(B)=  
(C)=

(D)=  
(E)=  
(F)=

QTY  
I R